

HOLE TOLERANCE  
UNLESS SPECIFIED  
PLATED: +/- .003  
NON PLATED: +/- .002

FINISHED HOLES IN MILS				
ALL UNITS ARE IN MILS				
FIGURE	SIZE	PLATED	QTY	TOLERANCE/NOTES
.	5.0	PLATED	12	DIA MAX
.	10.0	PLATED	785	DIA MAX
°	15.0	PLATED	6	
◊	25.0	PLATED	1	
△	40.0	PLATED	56	
◊	45.0	PLATED	38	
◊	50.0	PLATED	2	
◊	60.0	PLATED	2	
◊	65.0	PLATED	2	
A	50.0	NON-PLATED	1	
B	125.0	NON-PLATED	4	

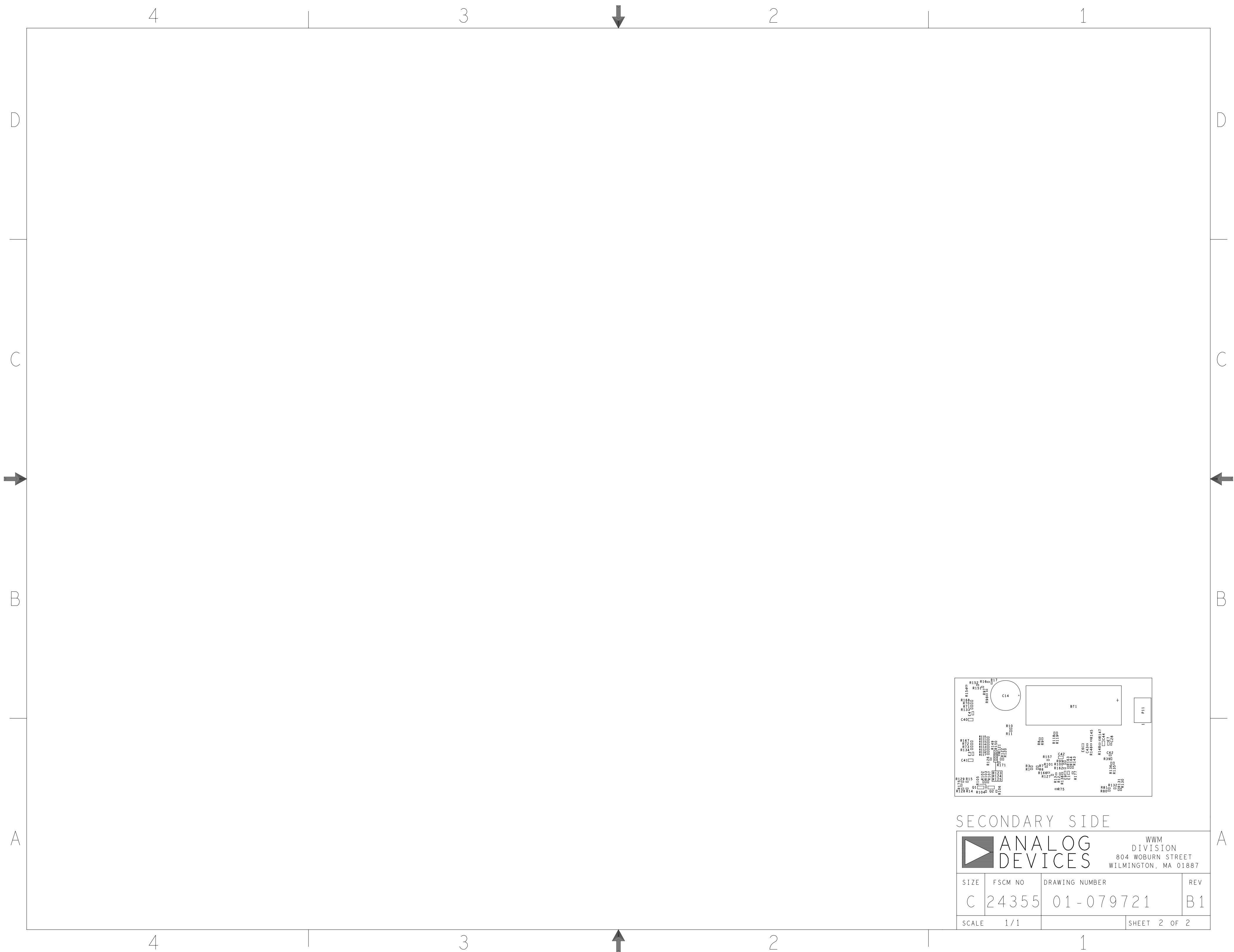
TOTAL HOLES: 909

REVISIONS			
REV	DESCRIPTION	DATE	APPROVED
A	INITIAL RELEASE	13JUL23	E. REYTA
B	ECR-116885	07DEC23	E. REYTA
B1	ECR-119053(UPDATE DNI LIST ON ASSY NOTES ONLY ) (NO CHANGE ON LAYOUT)	29JAN24	E. REYTA

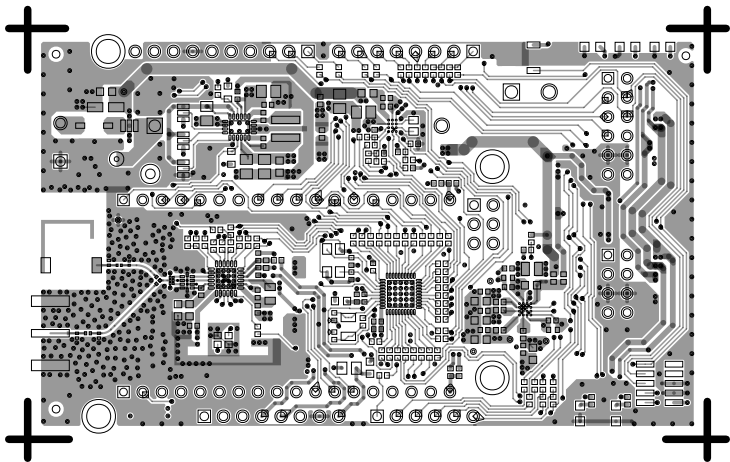
PRIMARY SIDE

UNLESS OTHERWISE SPECIFIED DIMENSIONS ARE IN INCHES TOLERANCES DECIMALS FRACTIONS ANGLES .XX -.010 --1/32 -- 2 .XXX -.005 .XXXX -.0050	APPROVAL		DATE	<div><div></div><div>ANALOG DEVICES</div></div> <div>WWM DIVISION 804 WOBURN STREET WILMINGTON, MA 01887</div>			
	TEMPLATE ENGINEER BILLY PHILLIPS		07APR21				
	HARDWARE SERVICES BOB MACDONALD		07APR21				
	HARDWARE SYSTEMS DAVE WILLIAMS		07APR21				
MATERIAL	TEST ENGINEER N/A		N/A	TITLE FABRICATION MAX32670-SX-ARDZ			
	COMPONENT ENGINEER ADGT LIBRARY		13JUL23				
	TEST PROCESS N/A		N/A				
	HARDWARE RELEASE C. PASIA		07DEC23				
FINISH	DESIGNER C. PASIA		07DEC23	SIZE	FSCM NO	DRAWING NUMBER	REV
	PTD ENGINEER E. REYTA		07DEC23	C	24355	09-079721	B
	CHECKER N/A		N/A				
	DO NOT SCALE DWG			SCALE	1/1		SHEET 1 OF 2

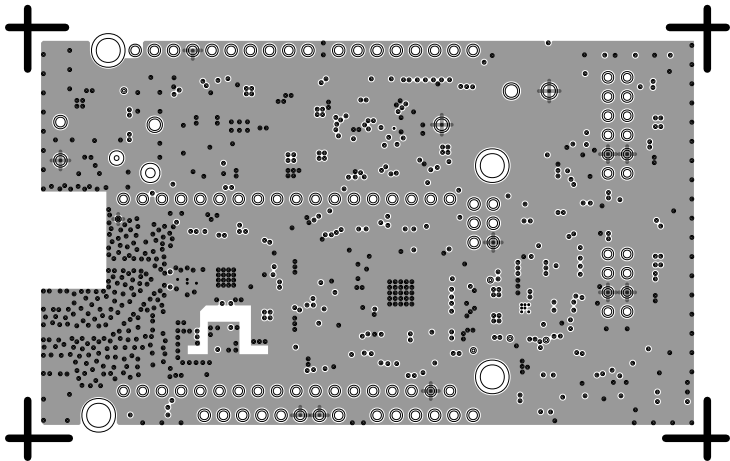




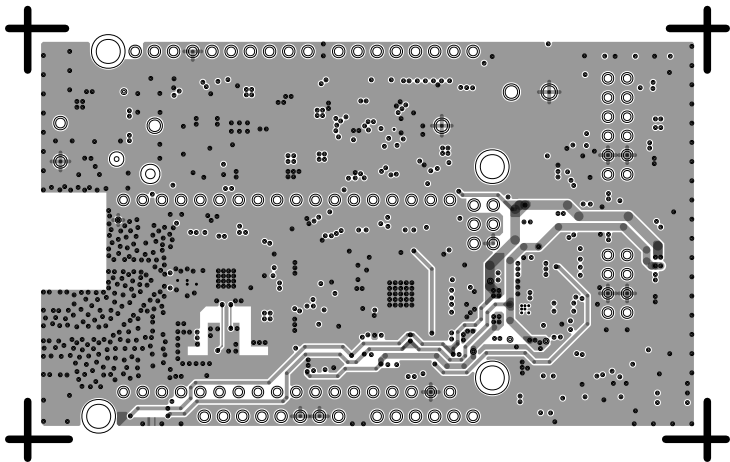
L1 PRIMARY  
08-079721-01  
REV B



L2 GND  
08-079721-07  
REV B



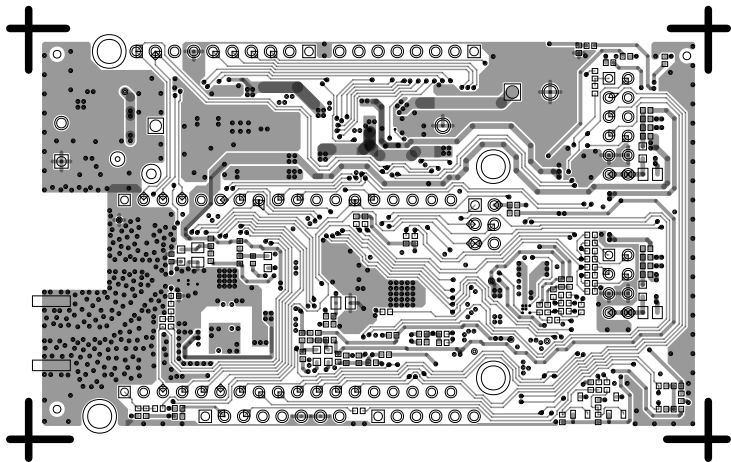
L3 PWR  
08-079721-08  
REV B



L4 SECONDARY

08-079721-02

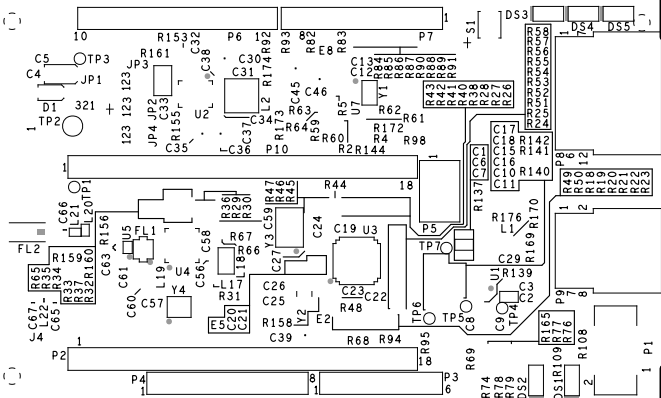
REV B



SILKSCREEN PRIMARY

08-079721-03

REV B

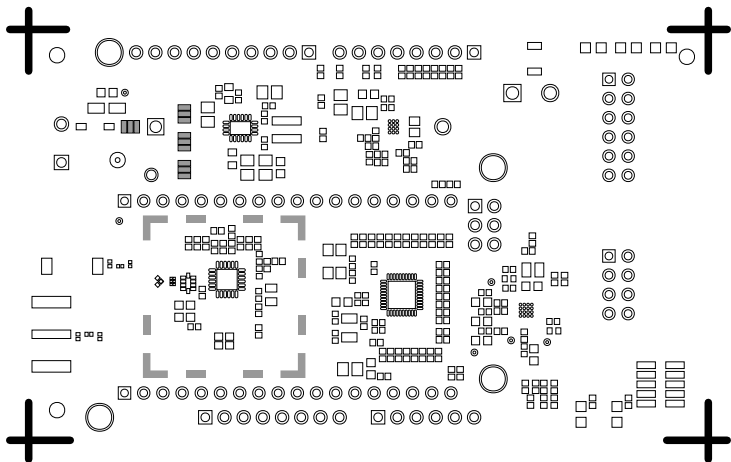




SOLDERMASK PRIMARY

08-079721-04

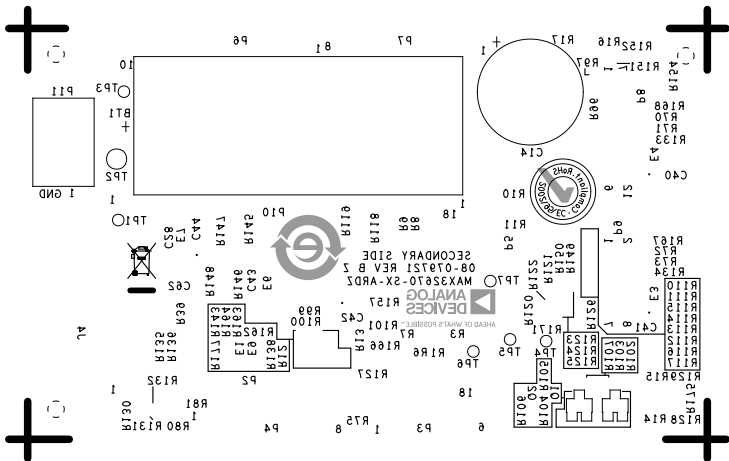
REV B



# SILKSCREEN SECONDARY

08-079721-05

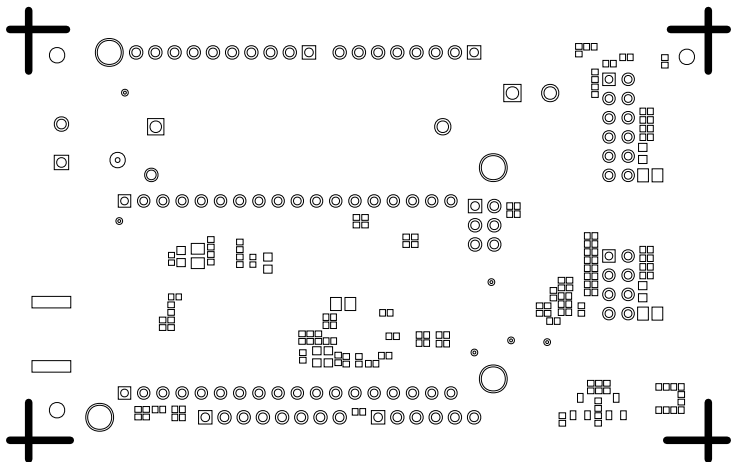
REV B



SOLDERMASK SECONDARY

08-079721-06

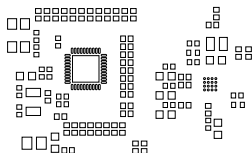
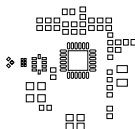
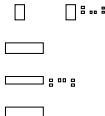
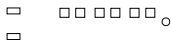
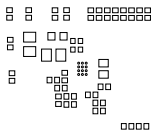
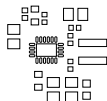
REV B



PASTEMASK PRIMARY

08-079721-09

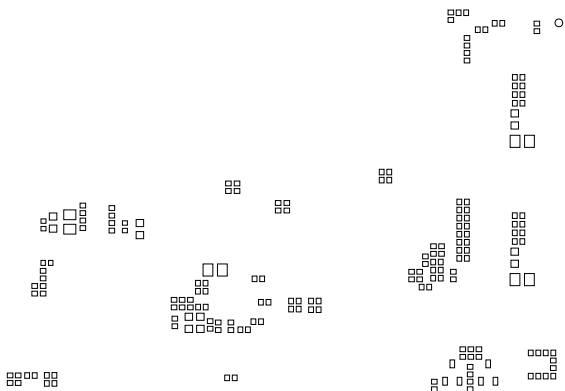
REV B



PASTEMASK SECONDARY

08-079721-10

REV B



D

- C

## B

- A

- SHEET 2 OF 2